

Spatially modulated magnetic structures in thin films

This article has been downloaded from IOPscience. Please scroll down to see the full text article.

2000 J. Phys. A: Math. Gen. 33 L459

(<http://iopscience.iop.org/0305-4470/33/47/102>)

View [the table of contents for this issue](#), or go to the [journal homepage](#) for more

Download details:

IP Address: 171.66.16.123

The article was downloaded on 02/06/2010 at 08:36

Please note that [terms and conditions apply](#).

LETTER TO THE EDITOR

Spatially modulated magnetic structures in thin films

W Selke†, D Catrein† and M Pleimling‡§

† Institut für Theoretische Physik, Technische Hochschule, D-52056 Aachen, Germany

‡ Institut für Theoretische Physik 1, Universität Erlangen-Nürnberg, D-91058 Erlangen, Germany

§ Laboratoire de Physique des Matériaux, || Université Henri Poincaré Nancy I, BP 239, F-54506 Vandœuvre lès Nancy Cedex, France

Received 11 October 2000

Abstract. The axial next-nearest-neighbour Ising (ANNNI) model is studied for thin films of up to $L = 10$ layers, with a distinct phase diagram for each film thickness. The systematics of the ordered phases, as obtained from mean-field theory, Monte Carlo simulations and low-temperature expansions, is discussed. Results are compared to those for the ANNNI model in the limit $L \rightarrow \infty$.

In recent years magnetism in thin films of a few atomic layers has attracted much interest [1]. However, studies on the influence of the layer thickness, L , on spatially modulated magnetic structures seem to be very scarce [2].

In the following, we shall deal with this aspect by analysing phase diagrams of the axial next-nearest neighbour-Ising (ANNNI) model [3–5] on a simple cubic lattice (setting the lattice constant equal to unity) consisting of rather few, but large layers. The competing interactions are supposed to be ferromagnetic between neighbouring spins in each layer, $J_0 > 0$, as well as between neighbouring spins in adjacent layers, $J_1 > 0$, and to be antiferromagnetic, $J_2 < 0$, between axial next-nearest-neighbour spins, distinguishing one of the three cubic axes, say, the z -axis. The resulting magnetic structures may exhibit non-trivial spatial modulations along the z -axis. In the case of indefinitely many and indefinitely large layers, the model displays a phase diagram with a plenitude of commensurate phases, including those springing from the multiphase point at zero temperature and those emerging from structure combination branching processes at finite temperatures, as well as incommensurate structures; see the reviews [3–5].

Here we shall consider thin films of L layers, with *free* boundary conditions at the surface layers. Note that the ANNNI model on finite lattices, connecting the first and last layers by *periodic* boundary conditions, has been studied quite extensively already, attempting to predict properties for $L \rightarrow \infty$. The scope of this Letter is, however, to determine the phase diagram of the ANNNI model with *free* boundary conditions at fixed film thickness. Attention may be also drawn to recent work on the semi-infinite ANNNI model, analysing critical surface properties near the Lifshitz point [6], which partly motivated our investigation.

To establish the phase diagrams for thin films, in particular for $L = 3, 4, \dots, 10$, we used mean-field theory, Monte Carlo simulations and low-temperature expansions. For simplicity, we set $J_0 = J_1$, both in the surface layers and in the bulk of the film. In the mean-field approximation [7–9], we solved the set of coupled nonlinear equations for the layer magnetizations, $m(z = 1, \dots, L)$, by standard iteration procedures starting from all possible

|| Laboratoire associé au CNRS UMR 7556.

combinations of fully ordered layers, $m = 1$ or $m = -1$, or completely disordered layers, $m = 0$; i.e. from, in principle, 3^L distinct configurations. To identify the stable phase, at given temperature, $\tau = k_B T / J_0$, and ratio of competing interactions, $\kappa = -J_2 / J_1$, we calculated the free energy for all resulting structures. This approach seems to be suitable to map correctly, in the mean-field approximation, the entire phase diagram. The Monte Carlo simulations, using the single-spin flip algorithm, were performed for lattices with $K \times K$ spins in each layer connected by periodic boundary conditions (for thicker films, an efficient layer flip algorithm may be useful [10]). To circumvent finite-size effects due to the layer size, K has to be chosen sufficiently large. Actually, we varied K from 10 to 100. To identify the phases springing directly from the degenerate ground states at $\kappa = 1/2$, low-temperature expansions to leading, first order [11, 12] were found to suffice in most cases.

At zero temperature, for L both odd and even, the ferromagnetic state is stable at $\kappa < 1/2$. For L even, at $\kappa > 1/2$, the ground state is the $\langle 2^{L/2} \rangle$ structure, where two layers of ‘up’ (‘down’) spins are followed by two layers of ‘down’ (‘up’) spins, with a total of $(L/2)$ pairs of such layers. (In general, $\langle \dots kl \dots \rangle$ refers to a phase at low temperatures where a ‘ k -band’, i.e. spins in k adjacent layers being oriented (predominantly) in one direction, say, ‘+’, is followed by an l -band of spins being oriented (predominantly) in the opposite direction, say, ‘-’ [12].) For L odd, structures consisting of 2-bands and one 3-band have the lowest energy at $1/2 < \kappa < 1$, while at $\kappa > 1$ the ground state contains 2-bands with a 1-band at one of the surfaces (of course, $\kappa = 1$ plays no special role for the ANNNI model with $L \rightarrow \infty$). The transition line, at $\kappa \approx 1$, between the corresponding phases is, at low temperatures, of first order.

The degeneracy, D_L , of the multiphase point, at $(\kappa = 1/2, \tau = 0)$, is related to the Fibonacci sequence by $D_L = D_{L-2} + D_{L-1}$, with $D_2 = D_3 = 2$. We studied the vicinity of that point by using low-temperature expansions [11, 12]. In the limit $L \rightarrow \infty$ [11], indefinitely many periodic, commensurate phases spring directly from that point, namely the ferromagnetic phase and phases in each of which 3-bands are separated by a fixed number, j , of 2-bands, $j = 0, 1, 2, \dots, \infty$. In thin films, obviously only a few phases may arise from the multiphase point, in particular, the ferromagnetic phase as well as additional phases formed mostly by 2-bands and 3-bands. For L even, the $\langle 2^{L/2} \rangle$ phase will be among the additional phases, while for L odd, all of these phases will have at least one 3-band (when it is just one 3-band, then that band will be preferably in the centre of the film). Note that structures consisting of 3-bands and a supplementary single 4-band or a single 5-band at one of the surfaces of the film occur when $L = 3n + 1$ or $L = 3n + 2$, $n = 2, 3, \dots$. Examples of those phases bordering, at low temperatures, the ferromagnetic phase are the $\langle 43 \rangle$, $\langle 53 \rangle$ and $\langle 433 \rangle$ phases. Again in contrast to the case $L \rightarrow \infty$, phases with 2-bands and *pairs* of 3-bands may be stable as well; examples are the $\langle 2332 \rangle$ and $\langle 332 \rangle$ phases. To understand the phase diagram in the vicinity of the multiphase point one should be aware of the fact that the stable phases correspond to the ground-state structures with a low energy and a large number of lowest-energy excitations. The latter property favours 3-bands, where the spins in both edge layers can be excited easily when both the preceding and the following band comprise at least two layers.

Examples of entire phase diagrams are depicted in figures 1 and 2 (a more complete set of phase diagrams can be found elsewhere [13]). In general, for thin films, there are not many ordered phases. The structures close to the transition to the paramagnetic phase, T_c , may be obtained in the mean-field approximation without difficulty from the linearized theory. One finds that the pattern of the layer magnetization $m(z)$ is either symmetric or antisymmetric about the centre of the film. Accordingly, some of the low-temperature phases discussed above cannot extend up to T_c , e.g. the $\langle 43 \rangle$ phase (note that the mean-field theory seems to reproduce the low-temperature behaviour qualitatively correctly). Each of the symmetric or

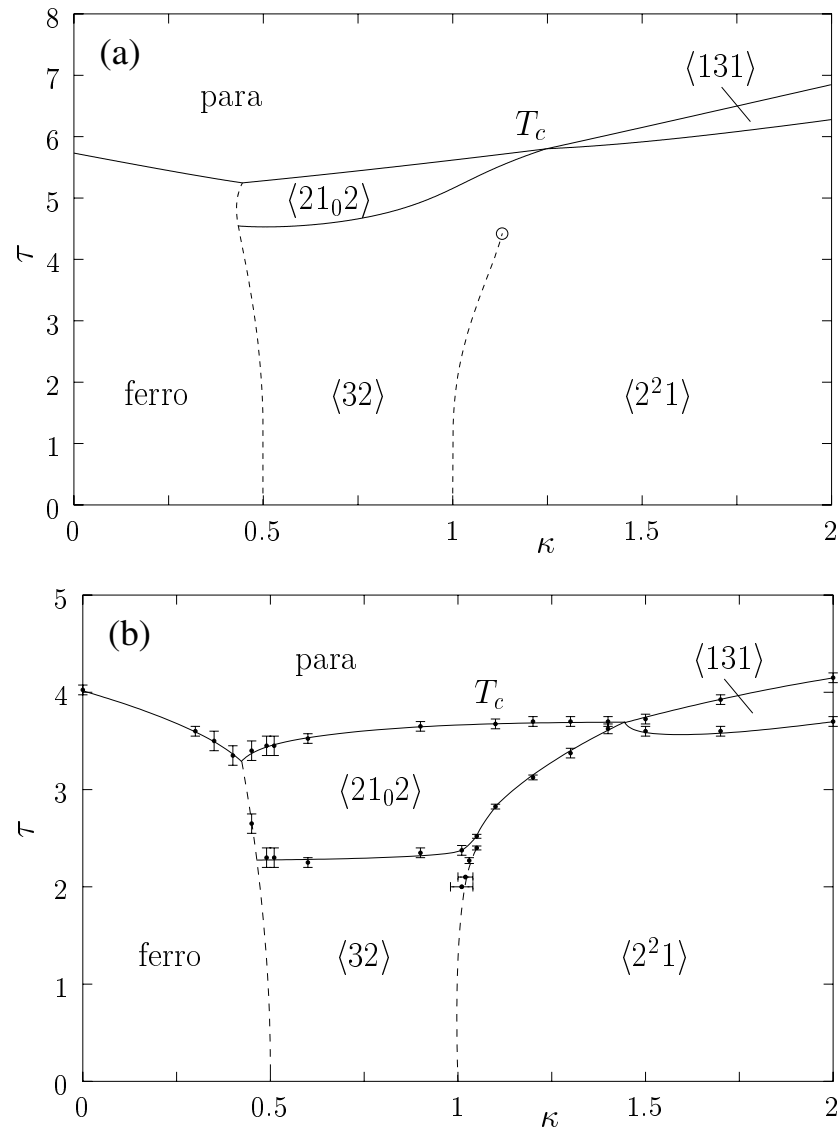


Figure 1. Phase diagram of the ANNNI model for $L = 5$ in the $(\tau = k_B T/J_0, \kappa = -J_2/J_1)$ -plane using (a) mean-field theory and (b) Monte Carlo simulations. Dashed (solid) curves denote transition curves of first (second) order. In the Monte Carlo case, the curves are guides to the eye.

antisymmetric phases is usually stable in a rather wide region of the phase diagram, for the thin films we considered. These features, symmetrization and possible instability of low-temperature phases close to T_c , are in marked contrast to the mean-field description of the ANNNI model with $L \rightarrow \infty$, where the structures below T_c form a devil's staircase. Perhaps most interestingly, we identified a new type of antisymmetric phase, with the centre layer of the film being disordered, for odd L . Examples are the $\langle 11_01 \rangle$, $\langle 21_02 \rangle$, $\langle 31_03 \rangle$ and $\langle 41_04 \rangle$ phases for $L = 3, 5, 7$ and 9 (we have modified the standard low-temperature notation in an obvious way by denoting the disordered layer by '1₀'; i.e. for instance, $\langle 11_01 \rangle$ represents a magnetization

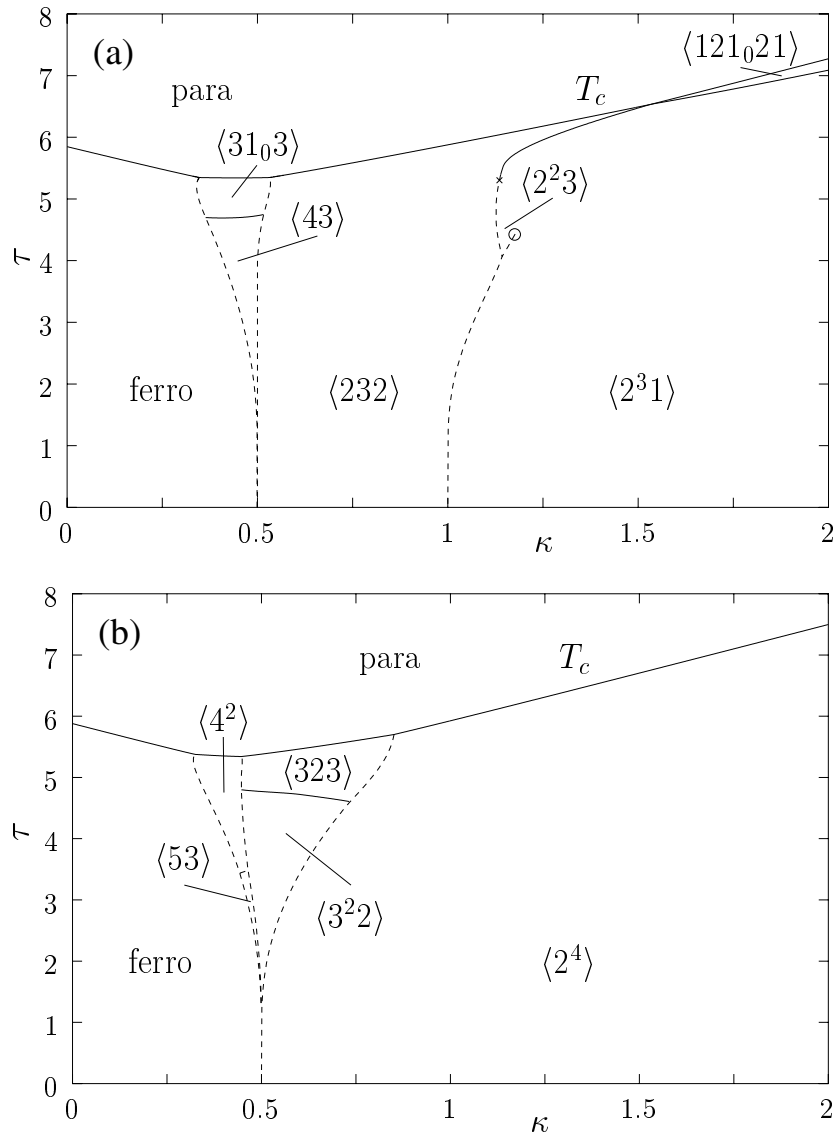


Figure 2. Phase diagrams of the ANNNI model, using mean-field theory, for thin films with (a) $L = 7$ and (b) $L = 8$ layers.

pattern where $m(1) > 0$, $m(2) = 0$, and $m(3) < 0$). For $L = 9$, at larger ratio of the competing interactions, κ , one finds another partially disordered phase, namely the $\langle 221_022 \rangle$ phase.

Partially disordered phases, with periodic arrangements of disordered layers, occur in mean-field theory of the ANNNI model, $L \rightarrow \infty$, at sufficiently weak intra-plane couplings, J_0 [14, 15]. They turned out to be an artefact of the approximation, as seen in Monte Carlo simulations [16]. However, in the present case, simulations confirm the prediction of mean-field theory of disordered centre layers, as we checked for L up to 9. Obviously, those phases are expected to exist only above the critical temperature of the two-dimensional Ising model; see figure 1.

Note that the sign of the magnetization $m(z)$ may change, at higher temperatures, in some layers without any phase transition. To characterize such a phase, we based the notation, used in the phase diagrams, figures 1 and 2, on the magnetization pattern of that phase in the low-temperature region. An example is the $\langle 323 \rangle$ phase (see figure 2) where, close to T_c , the magnetization in the third and sixth layers may change sign so that the 2-band in the centre expands, formally, to a 4-band, with the 3-bands shrinking to 2-bands. However, the phase keeps its symmetry, and there is no transition or degeneracy associated with this change of sign.

At intermediate temperatures, interesting features are observed as well. In the mean-field theory, the transition line to the $\langle 2^{(L-1)/2} 1 \rangle$ phase at $\kappa \approx 1$, being of first order at low temperatures, ends in a critical point ($L = 5, 7$ and 9). Simulations, for $L = 5$, seem to be in qualitative agreement (see figure 1) but careful and extensive finite-size analyses are needed to establish this aspect definitely. Moreover, at intermediate temperatures additional phases may be stabilized, neither springing directly from the ground states nor being (anti)symmetric. An example is the $\langle 54 \rangle$ phase for $L = 9$ (undergoing, at higher temperatures, a transition to the symmetric $\langle 41_04 \rangle$ phase). Indeed, if L becomes large enough, structure combination branching processes may occur, when compatible with the film thickness (again, with, possibly, slight rearrangements and modifications of bands, especially near the surface, as in the low-temperature region).

In summary, most of the distinct commensurate phases of the ANNNI model in the limit $L \rightarrow \infty$ are suppressed in thin films. Perhaps surprisingly, however, modified structures and novel phases are induced by the (small) thickness of the film, L , for example, among the phases springing directly from the multiphase point and among those close to the paramagnetic transition line. Certainly, it may be interesting to study the robustness of the findings against varying model parameters such as, for instance, the intralayer coupling, J_0 , in the surface planes.

Useful discussions with J Hager are gratefully acknowledged.

References

- [1] Pouloupoulos P and Baberschke K 1999 *J. Phys.: Condens. Matter* **11** 9495
- [2] Spišák D and Hafner J 1997 *Phys. Rev. B* **56** 2646
- [3] Selke W 1988 *Phys. Rev.* **170** 213
- [4] Yeomans J M 1988 *Adv. Phys.* **41** 151
- [5] Neubert B, Pleimling M and Siems R 1998 *Ferroelectrics* **208–9** 141
- [6] Binder K and Frisch H L 1999 *Eur. Phys. J. B* **10** 71
- [7] Bak P 1982 *Rep. Prog. Phys.* **45** 587
- [8] Selke W and Duxbury P M 1984 *Z. Phys. B* **57** 49
- [9] Janssen T and Tjon J A 1983 *J. Phys. A: Math. Gen.* **16** 673
- [10] Sato A and Matsubara F 1999 *Phys. Rev. B* **60** 10316
- [11] Fisher M E and Selke W 1980 *Phys. Rev. Lett.* **44** 1502
- [12] Fisher M E and Selke W 1981 *Phil. Trans. R. Soc.* **302** 1
- [13] Catrein D 2000 *Diploma Thesis RWTH–Aachen*
- [14] Yokoi C S O, Coutinho-Filho M D and Salinas S R 1981 *Phys. Rev. B* **24** 4047
- [15] Nakanishi K 1992 *J. Phys. Soc. Japan* **61** 2901
- [16] Rothhaus F and Selke W 1993 *J. Phys. Soc. Japan* **62** 378